



the
workin
group

General
Presentation

Tomasz Mordel
Partner
tomasz.mordel@theworkinggroup.net
+48 601 90 00 20

OUR COMPANY in the nutshell

Created
2020

By

- ✓ Marten Schoenherr
- ✓ Łukasz Ciechanowski
- ✓ Rafał Polański
- ✓ Tomasz Mordel

Operations

- ✓ Belgium
- ✓ United Kingdom
- ✓ Germany

Values

- ✓ teamwork
- ✓ trust
- ✓ quality
- ✓ responsibility

Mission

provide customer with top
technical expertise
| quality not quantity |

Teams & key data

- ✓ 40 consultants
- ✓ 3 technical teams - generic
- ✓ senior & expert level
- ✓ reactive programming approach
- ✓ 1 consulting team
- ✓ owner's roots comes from Telco sector
- ✓ - Ms Dynamics & Sana

HOW WE work?

Remote

An IT expert focused on the Western European market and remote delivery



Technologies

We are a team believing that our quality and responsibility will build trust of our customers and lead to long term cooperation



Cloud focused

Provider of the cloud focused CI/CD teams and DEVOPS services



OUR IT Domains



DevOps Factory



Teams Insourcing



T&M

Telco | IoT | Devops & CI/CD

Azure

Frontend & Backend Dev

Amazon Web Services



ACCESSIBLE team's skills



Devops&CI/CD

- ✓ Kubernetes
- ✓ Terraform
- ✓ Prometheus
- ✓ Jenkins
- ✓ Aws
- ✓ Azure

Backend

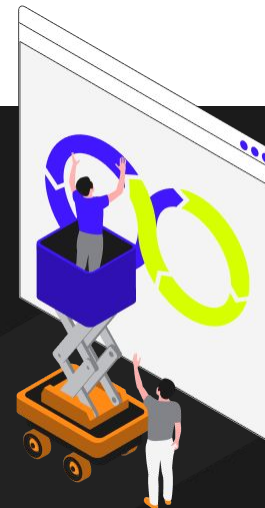
- ✓ Java
- ✓ Python
- ✓ .Net
- ✓ Node.js

Frontend

- ✓ React
- ✓ Angular
- ✓ Vue.Js
- ✓ PHP

Others

- ✓ Android&iOS
- ✓ Salesforce
- ✓ MS Dynamics CRM
- ✓ Sharepoint



WHY IS IT WORTH TO **work with us?**

No-fail delivery
approach

Modern development that
create solutions which can
scale when **your business**
growths

Remote delivery

Saving time by using our
expertise in new
technologies

Agile company

Projects that allow your
team to grow and
constantly **improve**

WHERE CAN WE **usually help?**

improving **time**
and the **quality**

- ✓ Customer's **people** turnover
- ✓ Decrease **cost** of **delivery**

- ✓ **“Turbulences”** in the existing IT project
- From **zero** to **MVP**, and from MVP to real **product**
- ✓ **Architecture** design for delivery of scalable and performance applications
- Optimize **cost** of **operations** and **maintenance**
- ✓

- ✓ Delivery of **expertise** knowledge
- ✓ Environmental issues with the public **cloud**

optimizing the **cost**

WHERE WE HELP R&D teams?



Knowledge Sharing

Providing necessary knowledge and experience for the most efficient development without bottle-necks



Team Extension

Extending the core R&D team to be able to address growing customer challenges



Flexibility

Growing fast without disturbing the life of the core R&D team



Quality Focus

Building quality level that will allow customer success



Expertise Retention

Ensuring competence retention in remote team



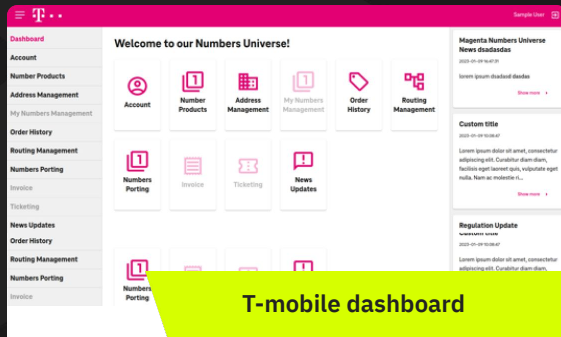
Time Management

Limiting time load on the core R&D team

REFERENCE: T-Mobile Number Portal

Business need

Simplify and expedite on-demand phone number ordering ensuring automatic validations, multi-system notifications, and full activity transparency.

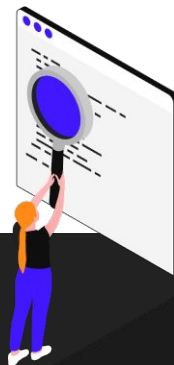


Our role

Architecture design, backend and frontend development, infrastructure management on Telekom hardware, tech support as a Telco consulting partner.

Technologies

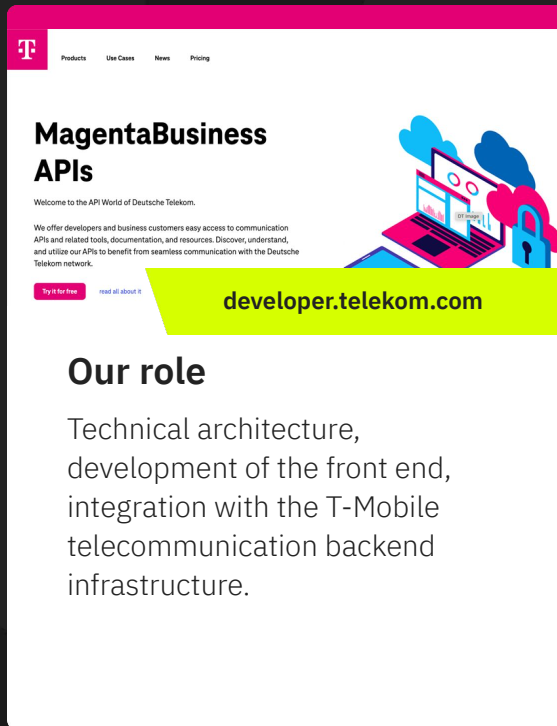
backend: java 11, spring-boot, spring-webflux, reactor, kubernetes
frontend: react.js



REFERENCE: T-Mobile Developer Portal

Purpose of the solution

A portal for telecom application developers, providing API access to telco infrastructure. It covers registration, authorization, and management of app access, with both free and paid options.



The screenshot shows the top section of the MagentaBusiness APIs developer portal. It features a pink header with the T-Mobile logo and navigation links for Products, Use Cases, News, and Pricing. The main heading is 'MagentaBusiness APIs' with a sub-heading 'Welcome to the API World of Deutsche Telekom.' Below this is a paragraph of introductory text and a 'Try it for free' button. To the right is an illustration of a laptop displaying a dashboard with charts and a padlock icon. A yellow banner at the bottom of the screenshot displays the URL 'developer.telekom.com'.

Our role

Technical architecture, development of the front end, integration with the T-Mobile telecommunication backend infrastructure.

Technologies

REST Api

backend: Java, Integration with OSS/BSS

frontend: react.js

REFERENCE: AWA



Purpose of the solution

AWA Messaging platform provides a Twilio-compatible REST API for end-to-end business messaging, integrating multiple global CPaaS providers and supporting complex client configurations.

API FOR TELCO

Our software stack focusing on Telecoms enables them to expose a RESTful API to customers and **aggregate** one or multiple SMS connections underneath the AWA feature set.

The platform offers full user & group management, granular pricing

```

@ExceptionHandler({})
public void handle(...) {
    // ...
}

@ExceptionHandler({})
public void handle(...) {
    // ...
}

```

awa.network/products/awa-messaging/

Our role

An R&D team involved from concept to MVP, now supporting product releases for real clients. TWG handles development, testing, and DevOps.

Technologies

AWS, CI/CD, java, spring-boot, keycloak as authentication, REST, and react.js.

AZURE Technical Support & Monitoring



Discover

Document with the customer current setup, licenses, credentials, resources

Snapshot of the current environment



Verify

Document with the customer current setup, licenses, credentials, resources

Updated snapshot



Form

Form the environment to the needs of application based on the definition

Target definition, Terraform version



Monitor

Monitor the status and version relevance according to defined need

9A Client Versioning repository

PROCESS

ARTEFACTS

EMERGENCY Service

Purpose of the solution

Ensures continuous operation of core business applications, minimizes potential losses, and increases satisfaction for end users and employees. Outsourcing reduces costs and optimizes resources.

What we do support?

Deutsche Telekom Digital Services Portal and it's 4 main services (products):

- ✓ Communication Platform as a service (CPaaS)
- ✓ Number Universe
- ✓ Workflow Automation
- ✓ Mail 2 sms

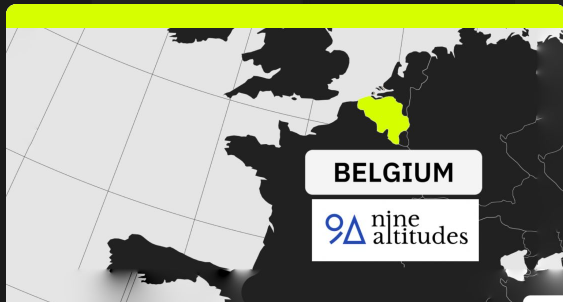
Time to market

Service was created in extremely short time, addressing strict SLA with implementation necessary tools for monitoring, alarming and maintaining the whole workflows.



REFERENCE:

9a - DevOps Factory



Business need

Leaving of key person responsible for CI/CD process in Azure environment and risk of lack support for complex solution of hundreds production instances.

"From our first contacts with TheWorkinGroup, it was evident they work closely with customers to achieve the best solutions, both in staffing and project execution. They add significant value to our project and continuously help us improve processes. The seamless collaboration with TheWorkinGroup's expert consultants has made them a crucial part of our team."

*— Diederick Hallynck,
Corporate GTM Director of 9altitudes*

TWG proposal

Devops service in DevOps Factory model, only 2 weeks transition period.

Customer benefits

Full responsibility for CD/CD process, improvements implemented for cost and performance optimization, knowledge not connected with the single person.

Technologies

AZURE, CI/CD, Agile approach

REFERENCE: **Klickrent**

Purpose of the solution

Portal for the easy rental of the construction related machines, covering the whole process within couple of basic clicks.

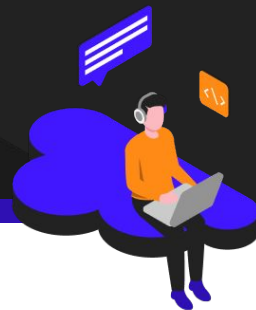


Our role

Technical architecture, development of the front end, integration with the backend infrastructure of developed by the customer.

Technologies

End to End development
Full-stack JavaScript
(React.js & Node.js),
Salesforce Integration



REFERENCE: Salesforce Klickrent



Purpose of the solution

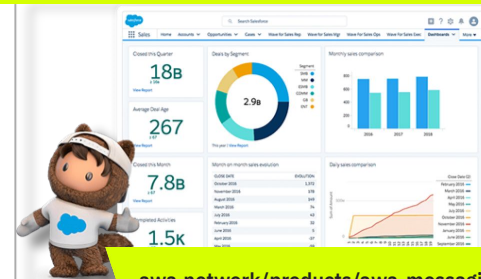
Salesforce is an integrated part of an internet-facing portal to customers, and used heavily from sales and support organizations to manage clients, contracts and orders.

Our goal

Decrease monthly cost of the service by delivering 2 consultants (Expert + Senior).

Technologies

Salesforce, Apex, REST, Visualforce, existing react.js and Node.js applications and integrations



awa.network/products/awa-messaging/

Our role

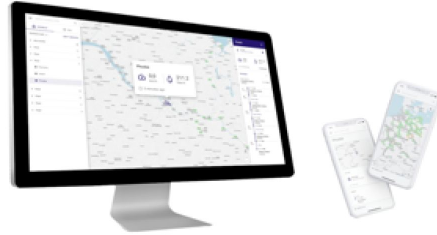
Support, maintenance and development of Salesforce stack with a lot of existing adaptations in an environment that serves already a lot of customer and contract data. Project Management.

REFERENCE:

Zeppelin Power Systems AEC.view

Purpose of the solution

The application monitors live performance data for factory and vessel engines, includes vessel location visualization, and features predictive maintenance.



Our role

Technical architecture, development of the front end, integration with the backend infrastructure of developed by the customer.

Technologies

Fullstack JavaScript (React.js & Node.js), Integration with 3rd party services and BI Platform



REFERENCE: Search Guard

Purpose of the solution

Developing an authorization plugin for OpenSearch and Elasticsearch, adding alerting capabilities to meet GDPR, HIPAA, PCI-DSS, and SOX compliance. Search Guard helps secure sensitive data.



Our role

Adjusting the Plugin, architecture, design, development of the and test automation framework, optimization of CI/CD.

Technologies

Netty, Quartz, React, TypeScript & JavaScript, GillLab, OAuth2, JWT, SAML, LDAP, X.509, Kerberos

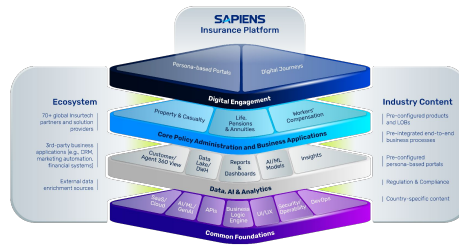


REFERENCE: Sapiens



Business need

Instant demand for additional work for German team for backend development with Ruby on Rails skills for core insurance product.



Sapiens

Our role

Understanding needs and finding the best candidate for additional work in extremely short time. Internal interviewing and assisting during boarding.

Technologies

Ruby on Rails - help with design of new features, Development and testing, knowledge sharing

Q&A

Questions?



Tomasz Mordel

Partner

tomasz.mordel@theworkinggroup.net

+48 601 90 00 20