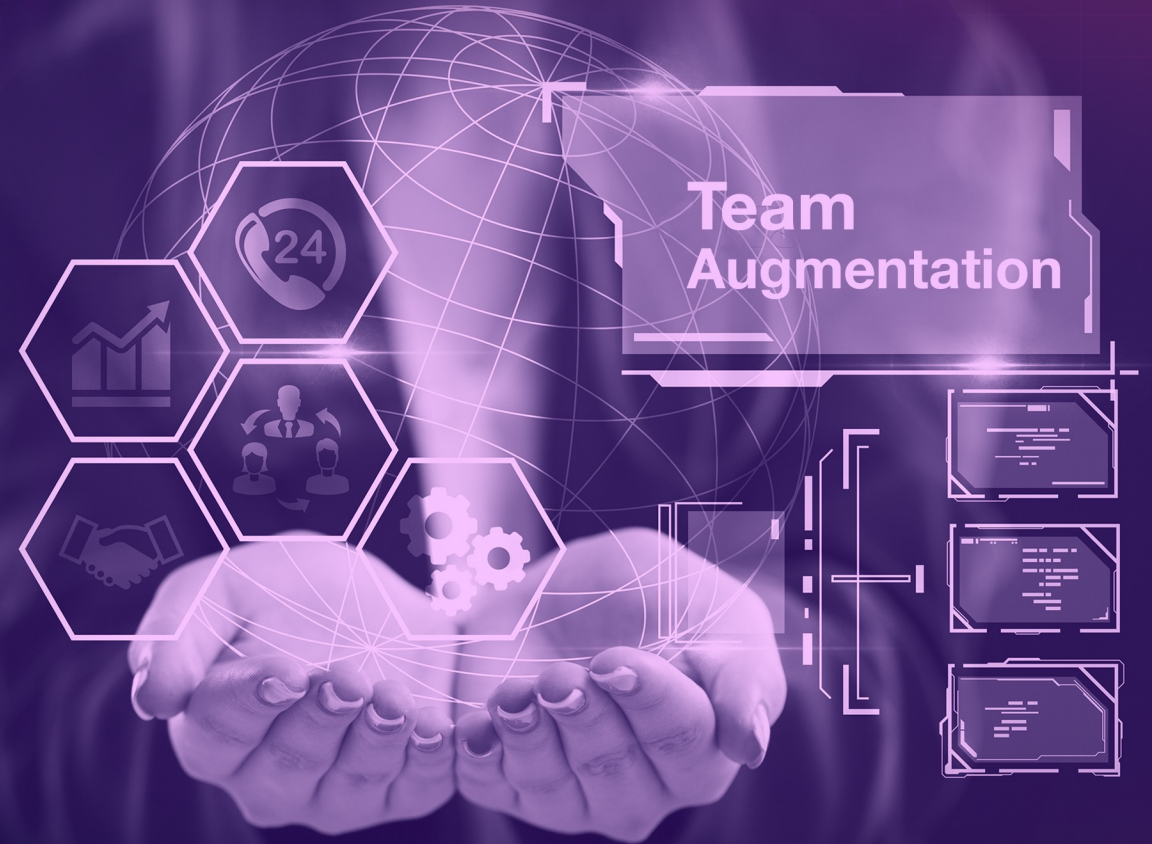


# Software Development Team Augmentation

March 2023

[www.communere.com](http://www.communere.com)






# Introduction to Communere

Communere is a software development company offering full lifecycle development with ongoing maintenance and support.

- Based in Guildford, Surrey, we incorporated in 2012 and support clients across multiple sectors, from GIS and Farming to Telecommunication.
- We maintain an unwavering commitment to quality and work in collaboration with our clients to design and implement the most effective solutions for their specific requirements.
- Our development team is composed of highly skilled professionals who possess expertise in their respective fields. The majority of our team members are certified Microsoft developers- we are a Microsoft partner.
- By leveraging our access to skilled professionals from western Asia and the advantages of remote work, we are capable of providing highly talented software professionals at a competitive price.




# Our Solutions




**IT Staff Augmentation**

Acquire additional skilled personnel to enhance your projects' progress by utilizing the services of the top 1% engineers who are completely integrated into your team.



**Dedicated Team**

A proficient and self-governing team with the ability to deliver technology solutions and value promptly and efficiently.



**Project-Based Model**

We offer a comprehensive team, consisting of a project manager, an outsourcing team comprising software developers, QA testers, and other professionals.



# | Communere Talent Overview:



## Team

- Top IT professionals
- Our engineers are proficient in different platforms and programming languages
- Large presence across Europe and Asia
- Our employee turnover rate is less than 7%, which is less than one-third of the industry average.



## Advantages

- 50+ Successful projects executed
- Software outsourcing for full life cycle
- of projects Our teams are aligned with your time zone.
- Our teams operate under a Design
- Thinking mindset, fostering innovation and efficiency in all of our processes

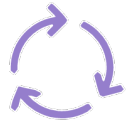


## Solid Delivery

- 100% Client retention rate.
- We deliver on time, on spec, and within budget
- We always provide value  
100% guarantee of our service continuity during the contract



# | Communere Talent Overview:



## Strict selection processes

We are an extremely process-driven organisation that has sustained incredible growth while maintaining an uncompromising and rigorous selection process for our employees.



## 100% Experienced Software Engineers

Our engineers have demonstrated their expertise through their experience of working in the relevant field for at least five years or more

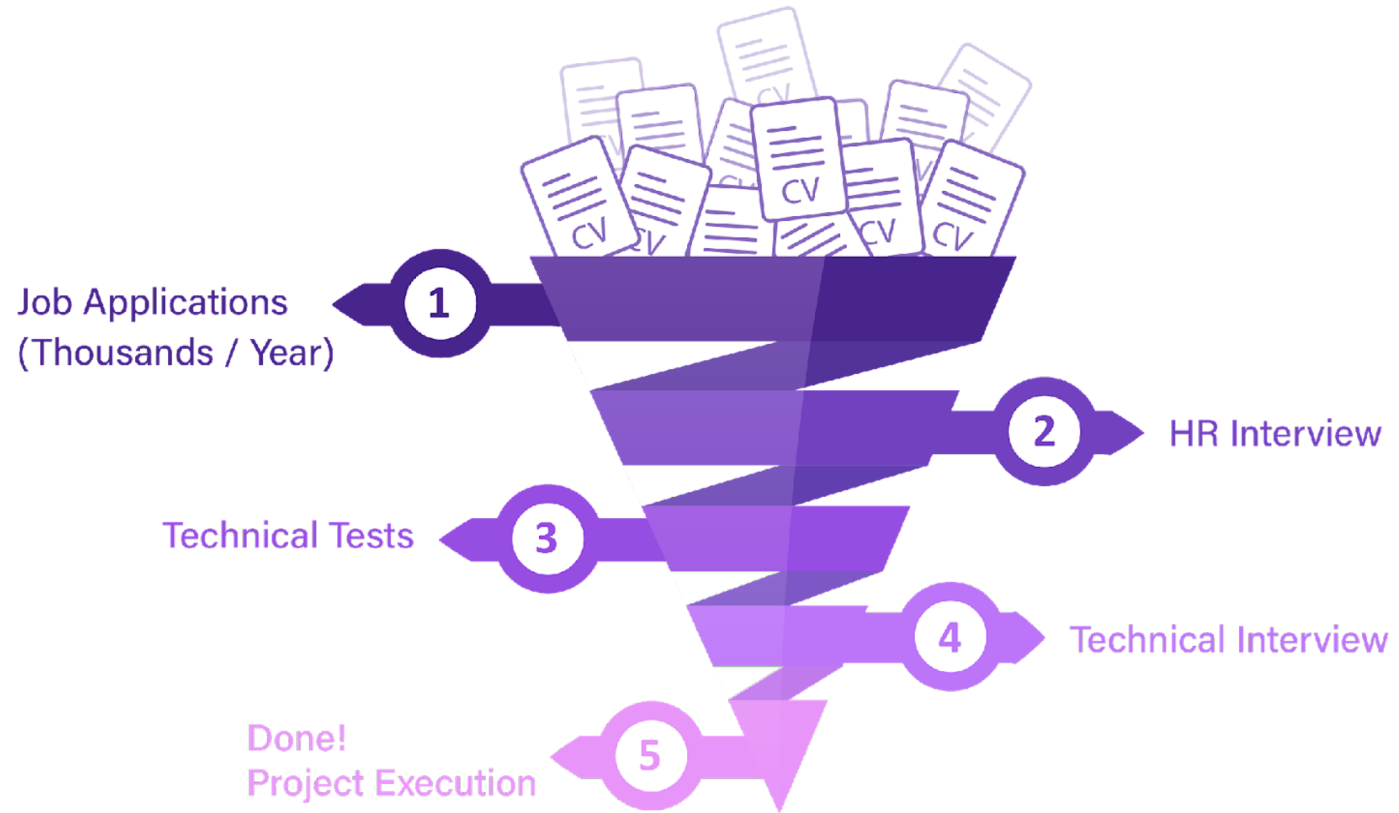


## Top IT Local Talent

We meticulously select and hire only the top 1% IT talent from a pool of several thousand applicants every year. Additionally, we have access to a database comprising of hundreds of thousands of IT professionals.



# | How we recruit?



# | How we recruit?



# | Testimonials

## Agxio

- **Agxio's** Mercury platform utilises machine learning to assess sustainability at a real-farm scale. Sensor network analytics provide detailed information on soil health, air and water quality, alongside a structured monitoring and alerts system that highlights key focus areas for sustainability. This allows the farmer to make informed management decisions to reduce environmental impacts and increase farm productivity.



**Dr. Stephen  
Christie**

CEO & Chief  
Scientist at Agxio

"Communere has been an exceptional technology partner who has worked with us for over 3 years. They deliver very strong development resources across the full IT stack. They deliver consistently high results, are very flexible and operate at the leading edge of technology. We have selected them above many other competitors as our preferred strategic partner for the long term."



# | Testimonials

## Basemap Ltd

- We enjoy longstanding client relationships e.g. we have provided ongoing software development support to **Basemap**, a digital mapping and transport data company, since 2012.



We utilise Communere to supplement our own in-house development team to add resource and expertise where needed. Having Communere staff sit virtually alongside our current developers has allowed for great integration of code and working practises across both organisations. We look forward to working with Communere over the coming years.



**Dan  
Saunders**

Head of  
products

# Contact us



## Phone

01483 685160  
07735020304



## Email

[hello@communere.com](mailto:hello@communere.com)



## Location

Communere Ltd,  
Surrey Technology Centre, 40 Occam Road,  
Guildford Surrey, GU2 7YG



Touch the World with Us

Thanks for Watching

